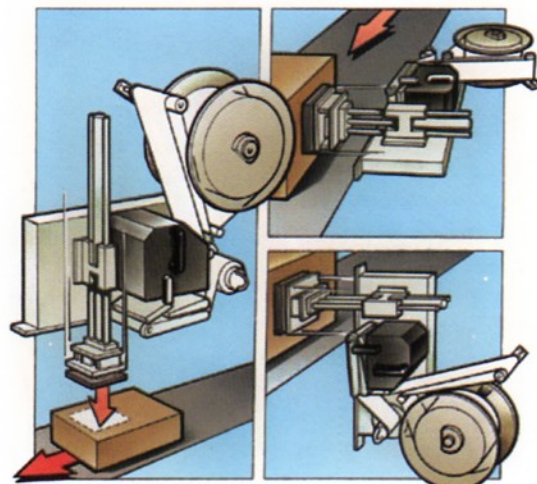
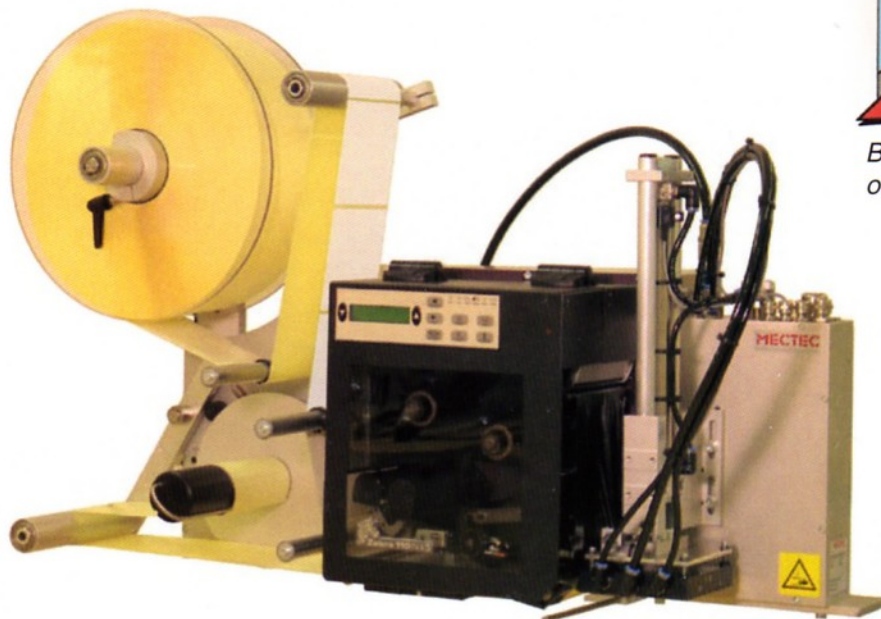


ST100 - ALL-ROUND BOX LABELLING

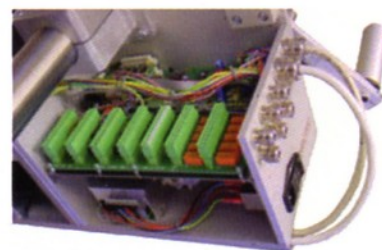
With the ST100 system we connect you to the world of Zebra® based printers and software. The usage of Zebra Pax III OEM Print Engine ensures you a fast and reliable solution - which easily can be integrated with almost any label- or printer software on the market today!



Box, tray and parcel labelling. Applies on both moving and stationary products!



Printer and applicator in left hand version



Controller and I/O:s easy accessible

TECHNICAL DATA

Type of applicator:	Tamp/Tamp-Blow. The blow can be switched off
Tamp size:	110 x 110 mm
Print speed:	Up to 300 mm/sec
Resolution:	8 or 12 dots/mm 200/300 DPI
Interface:	RS232 and Parallel (Ethernet optional)
Overall dimensions:	830 x 570 x 402 mm (l x h x w) - P & A
Controller functions:	On-Line operation only, 2 x 16 characters display and 9 keys on printer. 24 inputs, 26 outputs and 2 RS232 ports on controller. Warning Low level ribbon standard.

FAST FACTS

Printer:	Zebra Pax 110 4" Thermal Transfer
Application:	Side, top or bottom labelling Stationary or moving objects
Label size:	40 x 40 - 110 x 110 mm
Distance:	0 - 160 mm

Available in both right- and left hand version!

ACCESSORIES

- Warning Low Level Labels
- Label Check in the Applicator Pad
- Flashlight/Beacon
- Check scanner
- Fixed or adjustable stands

Industrial Labelling Systems Ltd.

Unit D4 Brookside Industrial Estate, Greengate, Middleton, Manchester. M24 1GS
Tel: 0161 655 4846 Fax: 0161 655 4849 Email: sales@ilsystems.co.uk
www.ilsystems.co.uk